

PRODUCTS

WWW.FLOWDIST.COM

PH: 02 4384 4128



-  JERSEYS
-  PANTS
-  PROTECTIVE GEAR
-  FREERIDE
-  LUGGAGE
-  GLOVES
-  GOOGLES/SHOES/CRANKS
-  HELMETS
-  CASUAL CLOTHING



-  COMPLETE BIKES
-  FRAMES/STICKERS



-  CUSTOM CLOTHING

MISCELLANEOUS

-  DVD



Kinetic Girls Jersey

- Race bred and developed
- Polyester "Cool-Tech" construction
- Breathable mesh design including forearm ventilation
- Shorty cuffs reduce arm pump
- Sub-dyed graphics won't fade
- Tagless neck label
- Anatomically correct girls fit for the ultimate in jersey performance and comfort
- Long, angle cut back helps to keep the jersey tucked into pants
- Available in sizes XS - L



Kinetic Jersey



- All new 8 panel design with mesh sides and forearms
- Race inspired construction for the ultimate in performance and comfort
- Hi-tech polyester breathable material with mesh lower sleeves and side panels for maximum ventilation
- Long angle cut back helps keep the jersey tucked into pants
- "Comfort-Stretch" collar
- Shorty cuffs reduce arm pump
- Sub-Dye graphics won't fade
- Tagless collar
- Available in sizes YXS - 2XL plus 3XL in Black/Steel and Red/White



208 Evolution Jersey

- TPR elbow detail
- Cuffless arms with Spandex to reduce arm pump
- Race bred for performance and comfort
- Multi-panel sewn design
- Three different panel materials for comfort, airflow, protection and stretch
- Tagless neck label
- Increased airflow
- Silicone printed tail stays tucked in
- Sub-dyed graphics won't fade
- Integrated TPR collar design
- Available in sizes YS-XXL



Kinetic Air ventilated Jersey

- Race bred and developed
- Polyester "Cool-Tech" mesh construction for maximum airflow
- Breathable mesh design including forearm ventilation
- Shorty cuffs reduce arm pump
- Sub-Dye graphics won't fade
- Tagless neck label
- "Comfort Stretch" collar
- Available in sizes YXS - 3XL



F-16 Jersey



- All new graphics with a more intense attitude
- Great quality, clean style, value price
- Soft, silky polyester construction
- Raglan sleeves with shorty cuffs and Lycra collar
- Sub dyed graphics
- Tagless collar
- Available in sizes YXS - 2X plus 3X-5X in Black/Primer





F-16 pants

- All new graphics with a more intense attitude
- 600 D poly nylon material
- Rib-flex panels in crotch, knees and calf for great comfort and fit
- 1000 D seat
- One strap, two snap waist
- TPR logos
- 1800 D knee panels
- Lower back flex panel
- Comfort liner
- Available in sizes 18-42 plus 44-48 in Black/Primer



208 Evolution pants

- Dual belt for fit and adjustability
- Stretch panels built into butt, thighs and knees to improve comfort and function
- TPR badges integrated into the pant for a clean look and stronger construction
- Unique 3 eyelet ventilation system designed to allow heat to be released in the knee area
- Fully ventilated lower legs using durable and race proven nylon mesh fabric
- New Fly Traction Knees are fully integrated into the leather knee panel to give increased bike control
- Generous contoured knees accommodate all types of knee braces and guards
- Available in sizes 22-42



Kinetic pants

- Race inspired thigh vents built into TPR allows air to go straight to the legs.
- Durable 840D Nylon construction
- Fully integrated TPR badges for comfort and style
- Ultra stretch knee/thigh construction for knee brace comfort
- Larger leather knee panel for protection and exhaust heat resistance
- Printed, suspended inner liner
- Low profile stretch cuffs with removable elastic band
- Full stretch crotch panel
- Mesh calf for breathability in boots
- Available in sizes 18 - 48, plus short sizes 28-40 in Black/Steel



Kinetic Girl pants

- Form-fitting construction built with girl in mind
- Low-rise waist
- Durable 840D Nylon construction
- Ultra stretch knee/high construction for knee brace comfort
- Larger leather knee panel for protection and exhaust heat resistance
- Printed, suspended inner liner
- Low profile stretch cuffs with removable spandex band
- Ultra long, vented, stretch panel on back of legs
- Mesh calf for breathability in boots
- Available in sizes 0/2-11/12



Kinetic Air ventilated pants

- 840 D durable nylon construction
- "Cool-Tech" mesh panels for the ultimate in ventilation
- Fully integrated TPR badges for comfort and style
- Ultra stretch knee/high construction for knee brace comfort
- Larger leather knee panel for protection and exhaust heat resistance
- Printed, suspended inner-liner
- Low profile stretch-cuffs
- Ultra long vented stretch panel on back of legs
- 1000 D butt panel
- Available in sizes 18-42





Airstrike Deflector

- New "DGP" polymer construction
- Smaller front panel for more mobility
- Great airflow
- Adjustable shoulders
- Great European quality at a low price

Colors available - click to see



Flex elbow guards

- Three layer neoprene construction for comfortable protection
- Kevlar® impact zone for durability and abrasion resistance
- Elbow cup designed to keep your protection in place
- Tough plastic shield sewn in to diffuse impacts
- Textile construction to avoid snagged or torn jerseys
- Wide range of sizes available to accommodate all riders
- Available in sizes S-XL



Convertible Deflector

- Quick-snap removable lycra foam allows for easy cleaning and even a color change of interior foam panels
- Reinforced, net-suspended shoulders
- Removable arm guards
- Fully adjustable, removable shoulders
- DGP polypropylene construction



Colors available - click to see



Flex knee/shin guards

- Impact resistant ABS plastic construction
- Perforated biofoam padding for increased airflow
- Calf pad for added comfort
- Wrap-around foam padding extends to the sides of your legs for better coverage
- Available in youth and adult sizes
- Available in youth and adult sizes



Undercover roost guard

- Soft mesh fabric behind padding for comfort and ventilation
- Biofoam padding to shield you from roost impacts
- Ventilated biofoam keeps you cool without sacrificing protection
- Comfortable Lycra® construction to keep the guard in place
- Flexible, lightweight TPR badges for added style
- Light-colored materials to help shed heat
- Two versions available, one with back padding and one without
- Available in sizes S/M and L/XL





Freeride jersey

- Durable poly silk construction
- Raglan cut sleeve for freedom of movement
- "Comfort-flex" collar
- Printed tags
- Shorty cuffs
- Exciting sub-dyed graphics
- All new unisex pink color
- Available in sizes YS-2X plus 3X-5X in Black/Grey



Freeride convertible pants

- Good pliable poly construction
- Zip-off lower legs
- Zip leg vents
- Zip lower leg (cuff) for easy on-off over boots
- Velcro cuff closure
- Flex control panel
- 2 Snap, 1 strap waist
- Printed full length liner
- 1000 D butt panel
- Unisex pink color
- Available in sizes 28-42 plus 44-48 in Black/Grey



Enduro jacket

- 300 D "Dura-Flex" nylon construction
- Waterproof chest zip vents
- Side and back vents
- Easy access storm flap cargo pockets
- Zip removable sleeves
- Lots of storage including cell phone pocket
- Race proven "Rider Cut" offers comfort and protection
- Embroidered logos
- Printed mesh liner
- Flow-thru ventilation system
- Available in sizes S - XXL



Freeride shorts

- Poly construction
- Zip leg vents
- 2 snap, 1 strap waist
- 1000 D butt panel
- Available in sizes 26-40





Moto Vault Bag

All new plastic molded lower section for strength, rigidity and "cool factor"

Multi-compartment system is the "complete gear bag for serious riders"

Adjustable inner partitions

Molded wheel holders for strength

Adjustable, retractable handle

Separate clean and dirty gear sections

Exterior business card sleeve to identify bag

Embroidered multi-color logos

A must for the true rider!!!



Roller Bag

Aluminum pull-out tote handle

Roller Blade wheels run smooth and carry lots of cargo

Ultra HD nylon twill construction

Ribbed PVC bottom with large rubber skid strips

Raised rubber logos

Padded floor mat folds out for a clean, soft changing platform

Chrome zippers

30" L x 15" W x 17" H



Flightpack

Back pack style gear bag

Constructed of heavy duty Cordura® nylon

Vented helmet and boot compartments

Mesh goggle pocket

Large size will accommodate a few sets of gear

30" L X 13" W X 27" H

24" L X 11" W X 20" H - JR.

Tour Bag

Removable divider to keep you organized

Fleece-lined pockets for goggles or other scratchable items

Durable, smooth-rolling rollerblade-style wheels

Telescoping handle stows neatly

Exterior business card sleeve to identify bag

Vent grommets allow dirty gear to breathe and dry



Carry-On

Ideal for carry-on air travel or perfectly sized for one set of riding gear

Separate dirty gear compartment

Made of ultra-durable 840 denier nylon

Comfortable molded rubber carry handles and removable padded shoulder strap

25" long x 12" high x 12" wide





Hydro Pack

- 70 oz. bladder keeps you hydrated on those long rides
- High flow rate bite valve
- Fully adjustable mesh shoulder straps
- Two external pockets hold snacks, keys, wallet, etc.



Backcountry Pack

- The ultimate dual sport/offroad do-all pack
- This pack is a backpack, 70 oz. hydration system and a fanny pack all in one
- Tool compartment has 14 separate pockets to organize tools and parts
- Wide, padded shoulder straps and back panel
- Waist and chest straps distribute load to relieve shoulders
- Pockets for 2 way radio/cell phone and hydration mouthpiece
- Cargo cinch straps minimize bouncing



Convertible Hydro Pack

- Innovative new product can be easily attached to our "Convertible Rock Deflector" so you don't have to choose between protection and a hydration system
- Hydro pack functions as a standalone hydration pack
- Internal organizer designed with tools in mind
- Thick protective layer between bladder and your back
- "Convertible Rock Deflector" sold separately



Jump Pack

- Clean, streamlined design
- Elasticized water bottle pockets
- Internal mesh pocket and organizer sleeve



Neat Freak backpack

- Padded laptop sleeve
- Stowable waist belt comes out when you need it and hides when you don't
- Unique hat clip to attach a cap externally
- Water-resistant MP3 player pocket
- Water-resistant, fleece-lined sunglasses pocket
- Stealth water bottle sleeves
- Internal organizer and stretch mesh sleeves



Moto Pack

- Plenty of room for all your stuff
- Padded shoulder straps
- Fold-out padded waist belt for heavier loads
- Comfortable molded rubber carry handle
- Organizer compartment for pens, wallet, keys, cell phone, etc.
- Perfect for travel, school or a day at the races

Tool Pack

- Heavy duty 1680 denier Cordura
- Security straps with buckles to keep everything together
- Compartments to hold all of your trailside necessities
- Metal clasp holds keys securely
- Compartment to hold small hardware





208 Evolution gloves

- Improved fit and thumb mobility
- Technically advanced and race inspired multi-material construction combine to offer support, feel and comfort
- Lightly padded high-grade Clarino® palm
- Knit and woven back panels for increased mobility
- Silicone finger grippers
- Sonic graphics for flex and lightweight
- Available in sizes 4-13



Fly Lite gloves

- Improved fit and thumb mobility
- Lightweight thin breathable...the "Lite" glove is pure race!!!
- Hi-tech "textured" Clarino® palm offers lots of "feel" on the bars
- Perforated palm with light, breathable woven back offers great "flow-thru" ventilation
- Silicone finger grippers
- Expanding Lycra® "stretch-cuff" system
- Available in sizes 4-13



Kinetic Girls gloves

- Super comfortable, lightweight race glove
- Woven back panel construction
- Soft-flex graphics
- Excellent ventilation
- Unpadded, single layer Clarino® palm
- Silicone finger grippers
- Adjustable wrist closure
- Available in sizes 5 - 9



Kinetic gloves

- Super comfortable, lightweight race glove
- Woven back panel construction
- Excellent ventilation
- Unpadded single layer Clarino® palm
- Silicone finger grippers
- Adjustable wrist closure
- Available in sizes 1-13



ATV Trigger glove

- Revolutionary new thumb design features a Stretch Kevlar band to offer flexibility for ATV and thumb style throttles
- Woven, knit and Lycra back panels for stretch, comfort and air flow
- TPR graphics
- New easy to use wrist closure
- Flex knuckle system
- Available in sizes 6-13





Switch inclement weather glove

- All new for 2008
- Water resistant neoprene
- Great for winter moto, enduro, snowmobile and watercraft racing
- Lycra® laminated neoprene back and fingers
- Clarino® palm
- Warm and Flexible
- Available in sizes 7-13



F-16 gloves

- Woven, knit and Lycra® back panels for stretch, comfort and air flow
- TPR graphics
- Wrist closure system
- Clarino® palm
- Flex-knuckle system
- Available in sizes 1-13



Talon SPD

- SPD compatible
- Simple 3 strap design
- Comfortable synthetic leather construction
- Mesh for ventilation
- Reflective strip on heel for night riding
- Available in US sizes 2 - 13 (33.5 - 48 European)



FR-1 Alloy Cranks

- Forged aluminum armset with 22- and 32-tooth chainrings as well as a 5mm bash guard
- ISIS drive 104/64 BCD
- 170mm and 175mm lengths available
- Also available as armsets only



- Polyflex™ urethane frame provides greater comfort and durability
- Lexan™ lens for maximum impact resistance
- Accepts all Scott 89 accessories
- Adjustable double buckle woven elastic strap
- Ultra comfortable hydrophilic face foam provides an excellent seal



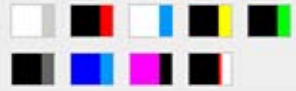


Venom



- D.O.T. approved
- Exciting clear coated graphics
- All new "Quick-Snap" plush absorbent removable washable liner
- High flow chrome mouthpiece
- Forced air flow-through ventilation
- Goggle grabbers
- Lightweight and tough composite shell
- 35mm cheek pads
- 20mm, 25mm, 30mm, and 40mm cheek pads available for a custom fit
- Available in sizes YS-XXL

Colors available - click to see



Trophy



- Snell 2005 and D.O.T. approved
- All new shell and interior design
- A full-featured helmet in a lightweight poly-alloy composite painted shell
- Custom U.V. clear-coated graphics
- Color-matched Quick-Snap removable, washable liner
- High flow mouthpiece design
- Forehead vent design provides high volume flow-through ventilation
- Goggle strap position pads keep goggles in place
- 20mm - 50mm cheek pads available separately for a custom fit
- Available in sizes YS-XXL

Colors available - click to see



Platinum LX

- Snell 2005 and D.O.T. approved
- A full-featured helmet in a lightweight poly-alloy composite painted shell with clear coated custom graphics
- Color matched removable, washable liner
- High flow mouth piece design
- Forehead vent design provides high volume flow through ventilation
- Goggle strap position pads keep goggles in place
- 35mm cheek pads included
- 20mm, 25mm, 30mm and 40mm cheek pads available for a custom fit

Renaissance Graphic Colors



Relic Graphic Colors





Maverick

Lightweight BMX / DH helmet (size small weighs 2.61 lbs.)

High impact fiberglass shell

20 vents allow high flow ventilation

Removable / washable liner and cheek pads

CPSC certified

Available in sizes YS-XL



Fly Lite Tyler Evans replica

Snell 2005 and D.O.T. approved

Carbon fiber / Kevlar® shell

Custom Lathrop designed graphics with a matte finish

Comfortable, color-matched Quick-Snap liner is easily removable and washable

Forced air induction ventilation

20mm - 50mm cheek pads available separately for a custom fit

Available in sizes XS-XXL



606 IV Tyler Evans replica

Snell 2005 and D.O.T. approved

A full featured helmet in a lightweight poly-alloy composite painted shell with U.V. clear coated custom graphics

High flow mouth piece design

Forehead vent design provides high volume flow through ventilation

20mm - 40mm Quick-Snap cheek pads available for a custom fit

Available in youth sizes YS-YL only



Trailride Tee

Available in sizes YS-XXL



Sketch Tee

Available in sizes YS-XXL



Speed Tee

Available in sizes YS-XXL



Badge Tee

Slim cut for a fitted look

100% soft, pre-washed cotton

Available in sizes YS-XXL



Die Hard Tee

Available in sizes YS-XXL



Freehand Tee

Available in sizes YS-XXL





Aspen Shirt

Poly/cotton blend

Wrinkle resistant

Available in sizes XS-XXXL



F-Wing Tee

Available in sizes S-XXL



Fly Shorts

Available in sizes 26-42



Decay Tee

Available in sizes YS-XXL



Pit Shirt

All new design

Embroidered graphics

Mesh panels

Available in sizes S-XXL



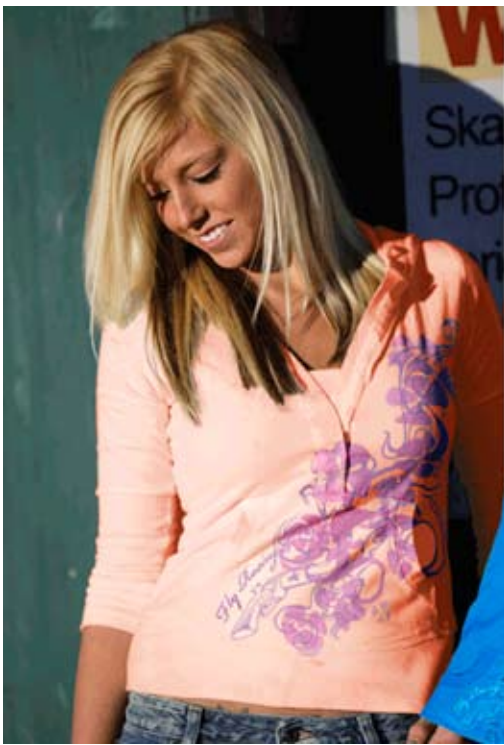
Swank Shorts

Stealth cell phone pocket

Plaid shorts are 100% polyester

Black and white shorts are a polyester/spandex/cotton blend

Available in sizes 26-42



Hottie Hoody

Available in sizes XS-XL



F-Wing Tank

Available in sizes S-L

Flower Tee

Available in sizes S-XXXL



Fly Standard Tee

Available in sizes S-XXXL



Shorts

Feminine cut shorts

Durable cotton/poly construction

2 pockets, Fly logo design

Stretch waist belt system

Available in sizes 01-13





Jane Frost Jacket

Available in sizes S-L.



Decay Hoody

Heavy duty long sleeve hoody
Great quality, clean style, value price
Comfortable cotton
Zip front, 2 pockets
Available in sizes S-XXL



City Hoody

Heavy, warm polyester construction
Thick fleece lining
Embroidered, appliqué and screen print graphics
Available in sizes S-XXL



Jack Frost Jacket

Available in sizes M-XL.



City Slicker

Urban-camo sub-dyed upper pattern
"Smooth Poly" construction
"Tall Collar"
"Frayed Edge" logo
Hand warmer pockets
Knit comfort cuffs
Available in sizes S-XXL



Pit Jacket

Technical, water resistant nylon shell
Large zip ventilation access
Cargo pockets with hidden hand warmer pockets
Removable hood
Available in sizes S-XXL

F-Wing Hat

Embroidered graphics

Genuine Flexfit hat

Available in sizes S/M and L/XL



Crest Beanie

Comfortable poly/wool construction

One size fits all



Embroidered F-Wing Hat

Embroidered graphics

Genuine Flexfit hat

Available in sizes S/M and L/XL



Gunsmoke Hat

Embroidered graphics

Genuine Flexfit hat

Available in sizes S/M and L/XL



VIP Hat

Embroidered graphics

Wool blend

Fitted

Available in sizes 7 1/8, 7 1/4, 7 1/2 and 7 3/8



Aspen Belt

Available in sizes 28-42



Casual Socks

Woven graphics

Durable, high quality construction

Available in sizes S/M - L/XL

Twenty4 - Pro Cruiser

Frame 6061 Alloy.

Fork 1 1/8th cromoly.

Semi integrated sealed bearing headset.

Stem 50mm forged alloy.

Soft kraton grips.

V Brakes.

14G X 36H double wall rims.

44T alloy front sprocket.

175mm tig welded tubular 3 piece cranks 4130 cromoly,

19mm spindle, sealed bearing.

Alloy seat post.

Pearl Red or Pearl White frame, all black components.



John "The Jackal" Pursue Signature Pro 20"

Frame 6061 Alloy.

Fork 1 1/8th cromoly.

Semi integrated sealed bearing headset.

Stem 50mm forged alloy.

Soft kraton grips.

V Brakes.

14G X 36H double wall rims.

44T alloy front sprocket..

175mm tig welded tubular 3 piece cranks 4130 cromoly, 19mm spindle, sealed bearing.

Alloy seat post.

Pearl Red or Pearl white frame, all black components.

Junior



Colours Available : Pearl White
Pearl Black

Frame Specifications

Toptube: 18.50"

Chainstay: 13.75"

BB Height: 10.75"

Headtube: 1"-72.5°

Seattube: 22.2mm-71°

Features

2lbs 3oz / 1043.64 grams

Race proven geometry

Double-buttet 100% aluminum frame tubes

Reinforced head tube gusset

CNC-machined head tube and Euro bottom bracket

Oversized downtube

3-D CNC-machined rear dropouts

Powder-coated finish

Expert XL



Colour for illustration purpose only.
Colours Available : Pearl White
Pearl Black

Frame Specifications

Toptube: 20"

Chainstay: 13.75"

BB Height: 11.50"

Headtube: 1-1/8"-73.5°

Seattube: 22.2mm-73°

Features

2lbs 8oz / 1182.94 grams

Race proven geometry

Double-buttet 100% aluminum frame tubes

Reinforced head tube gusset

CNC-machined head tube and Euro bottom bracket

Oversized downtube

3-D CNC-machined rear dropouts

Powder-coated finish

Pro



Colours Available : Pearl White
Pearl Black

Frame Specifications

Toptube: 20.75"
Chainstay: 15.00"
BB Height: 11.50"
Headtube: 1-1/8"-74°
Seattube: 27.2mm-71°

Features

3lbs 6oz / 1632.93 grams
Race proven geometry
Double-buttressed 100% aluminum frame tubes
Reinforced head tube gusset
CNC-machined head tube and Euro bottom bracket
Oversized downtube
3-D CNC-machined rear dropouts
Powder-coated finish

Pro XL



Colour for illustration purpose only.
Colours Available : Pearl White
Pearl Black

Frame Specifications

Toptube: 21.25"
Chainstay: 15.00"
BB Height: 11.50"
Headtube: 1-1/8"-74°
Seattube: 27.2mm-71°

Features

3lbs 7oz / 1678.29 grams
Race proven geometry
Double-buttressed 100% aluminum frame tubes
Reinforced head tube gusset
CNC-machined head tube and Euro bottom bracket
Oversized downtube
3-D CNC-machined rear dropouts
Powder-coated finish

Pro XXL



Colours Available : Pearl White
Pearl Black

Frame Specifications

Toptube: 21.75"

Chainstay: 15.00"

BB Height: 11.50"

Headtube: 1-1/8"-74°

Seattube: 27.2mm-71°

Features

3lbs 8oz / 1723.65 grams

Race proven geometry

Double-butted 100% aluminum frame tubes

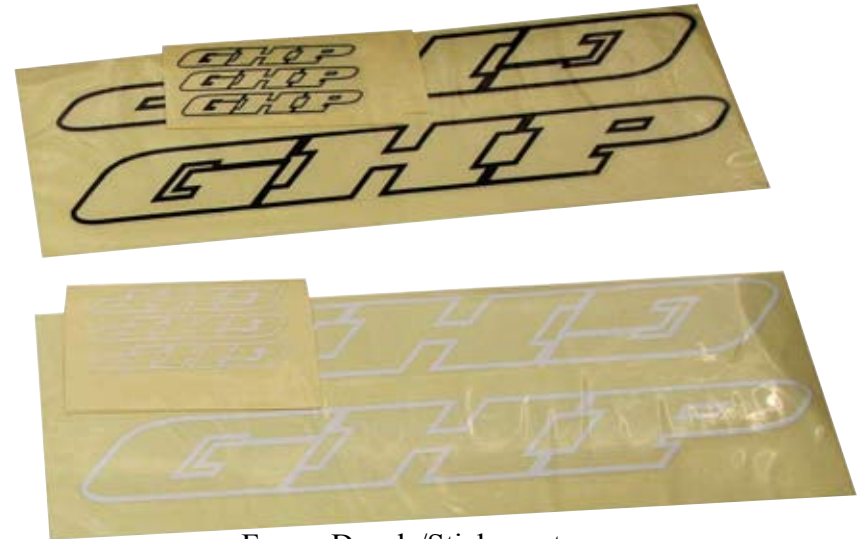
Reinforced head tube gusset

CNC-machined head tube and Euro bottom bracket

Oversized downtube

3-D CNC-machined rear dropouts

Powder-coated finish



Frame Decals/Sticker sets

CUSTOM DESIGN AND MADE CYCLING JERSEY'S

Custom designed and made cycling jersey's (BMX, MTB or road cycling), or create your own design. 100% polyester, fully sublimated in your design or have our professional designers create your custom look. Youth sizes through to XXL. No minimum quantity required. Great for teams, clubs and promotions.

Custom design and made T-shirts also available.
Go to FLOWDIST.com to see sizing and jersey templates.



THE EDGE CYCLES



TERRIGAL BMX CLUB



BMXWORLD
MAGAZINE



BMXPRESS
MAGAZINE



BMXSTARS